

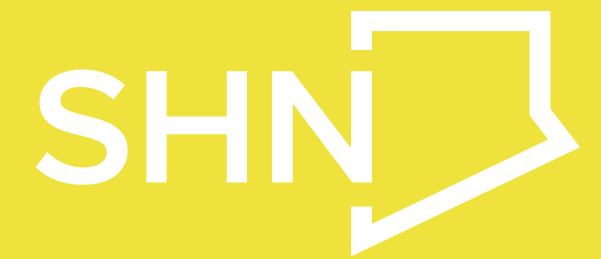
**ALL STAFF
AND
VISITORS**

**Please clean your hands
before entering and
after leaving the room.**





CONTACT PRECAUTIONS



Visitors must check in with the nursing station before entering.

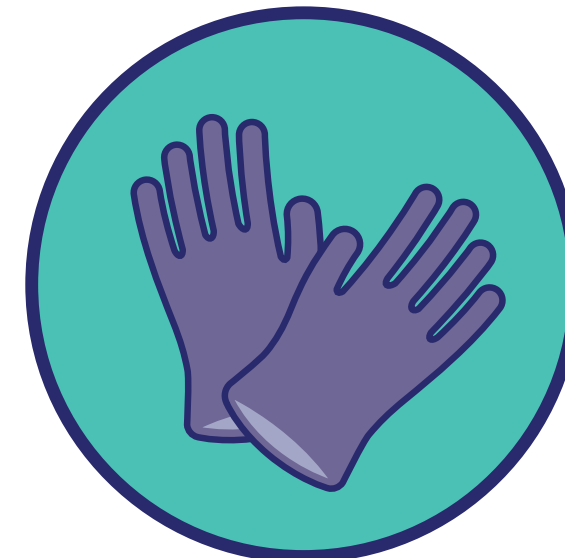
WHAT TO DO BEFORE ENTERING THE ROOM



STEP 1
Sanitize hands
for 15 - 20 seconds



STEP 2
Put on gown,
tie at back



STEP 3
Put on gloves



DROPLET/ CONTACT



Visitors must check in with the nursing station before entering.

WHAT TO DO BEFORE ENTERING THE ROOM



STEP 1

Sanitize hands
for 15 - 20 seconds



STEP 2

Put on gown,
tie at back



STEP 3

Put on surgical
mask with
eye protection



STEP 4

Put on gloves

**ALL STAFF
AND
VISITORS**

AIRBORNE



Visitors must check in with the nursing station before entering.

WHAT TO DO BEFORE ENTERING THE ROOM



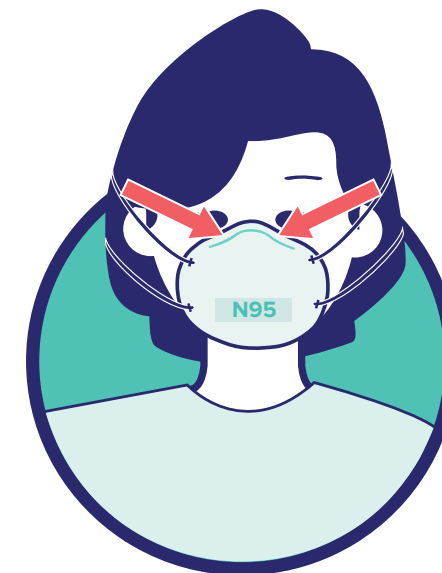
STEP 1

**Sanitize hands
for 15 - 20 seconds**



STEP 2

**Put on
N95 mask**



STEP 3

**Press top of mask
down over nose**

Please note: Always keep the door closed.



AIRBORNE/ CONTACT



Visitors must check in with the nursing station before entering.

WHAT TO DO BEFORE ENTERING THE ROOM



STEP 1

Sanitize hands
for 15 - 20 seconds



STEP 2

Put on gown,
tie at back



STEP 3

Put on
N95 mask



STEP 4

Press top of
mask over nose



STEP 5

Put on
gloves

Please note: Always keep the door closed.



AIRBORNE/ DROPLET/CONTACT



Visitors must check in with the nursing station before entering.

WHAT TO DO BEFORE ENTERING THE ROOM



STEP 1

Sanitize hands
for 15 - 20 seconds



STEP 2

Put on gown,
tie at back



STEP 3

Put on
N95 mask



STEP 4

Press top
of mask
over nose



STEP 5

Put on eye
protection goggles
or face shield



STEP 6

Put on
gloves

Please note: Always keep the door closed.