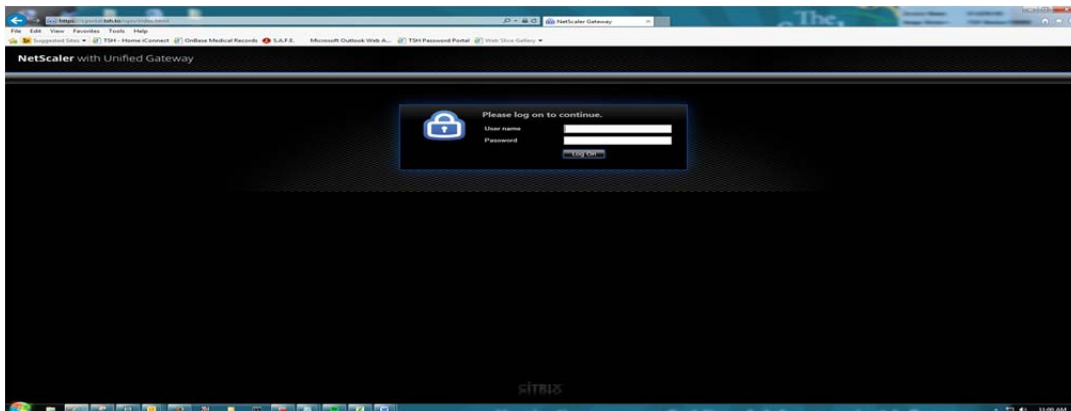


Guide to TSH Citrix Portal

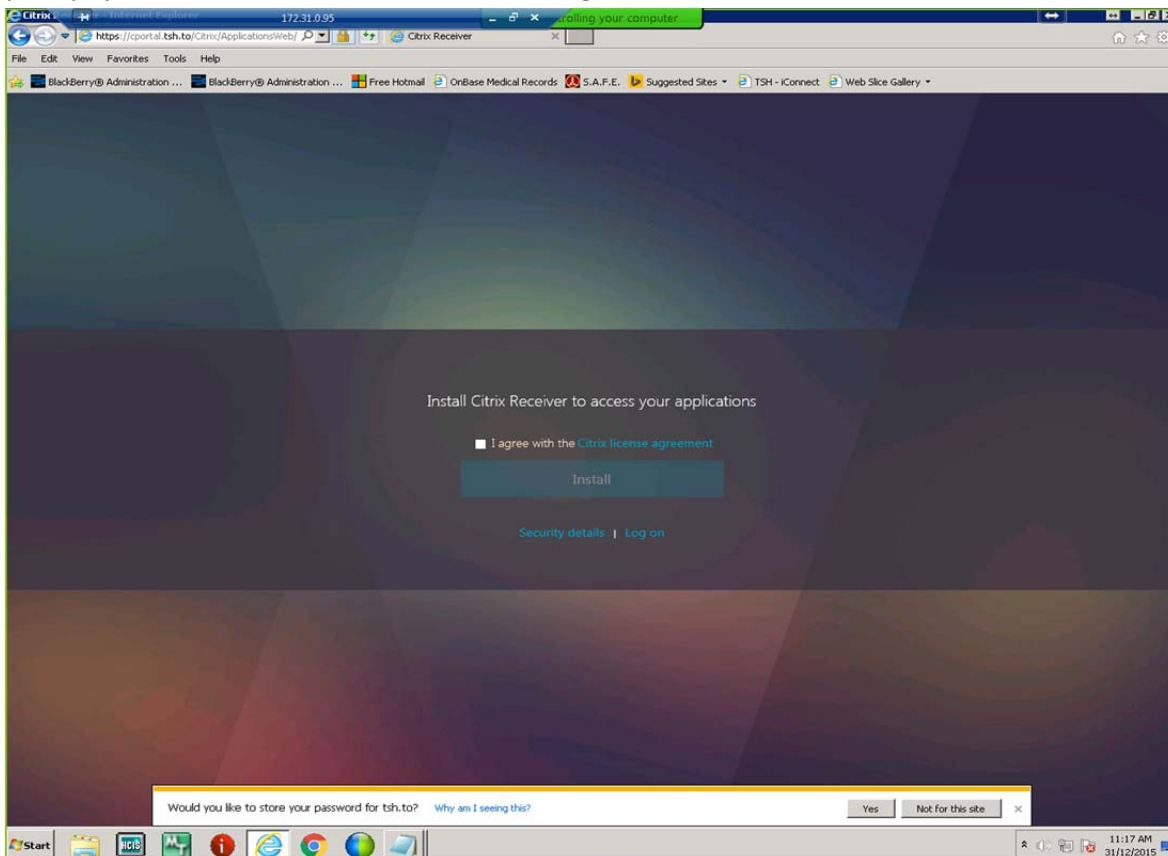
1. Open your preferred web browser and go to <https://cportal.tsh.to>



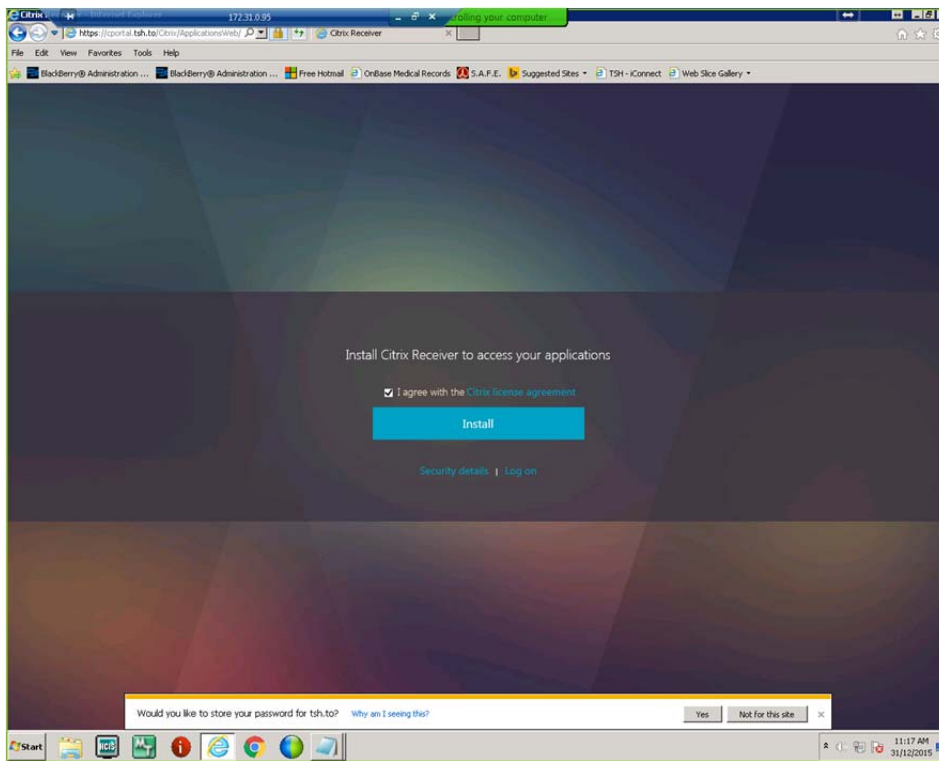
2. It will take you to this website (see below screenshot) and you will have to use your TSH username (p.anansu) and password.



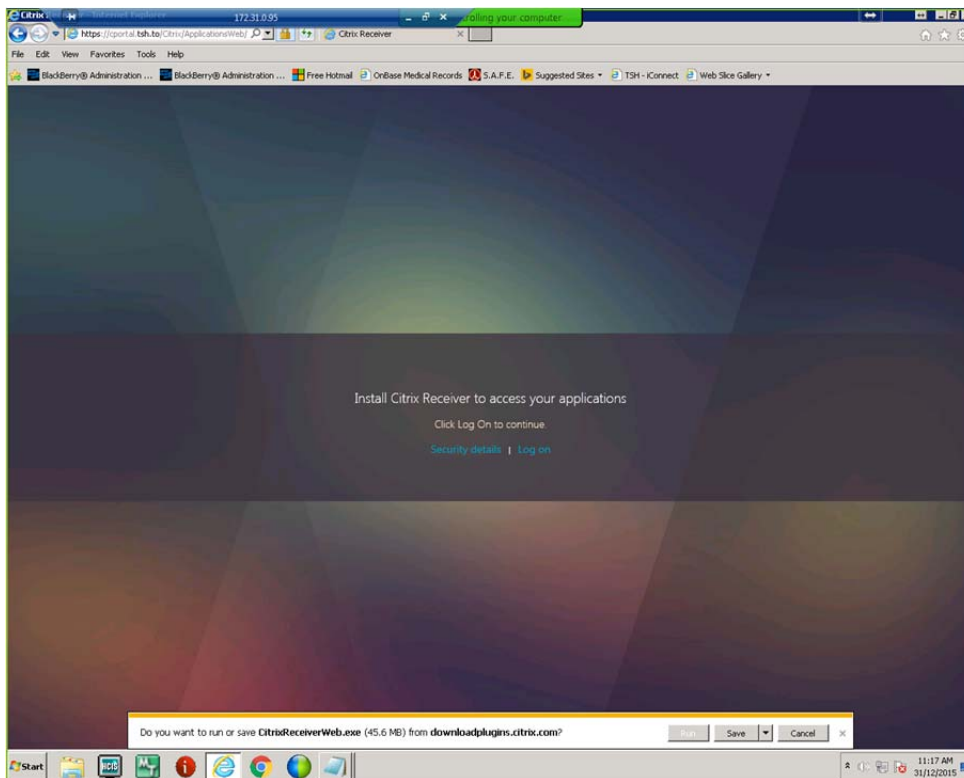
3. Once you have logged in with your TSH username/password, if you do not have Citrix already installed, it will prompt you to install. Click on the checkbox to agree to the Citrix terms.



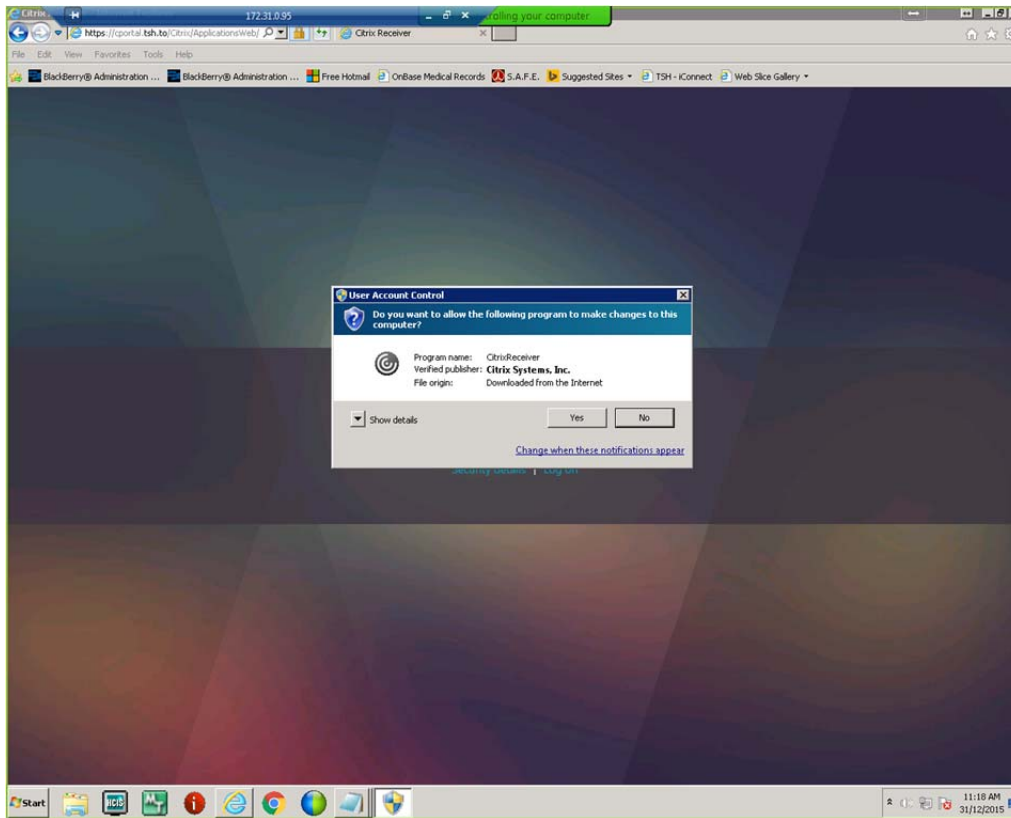
4. Click on **INSTALL**.



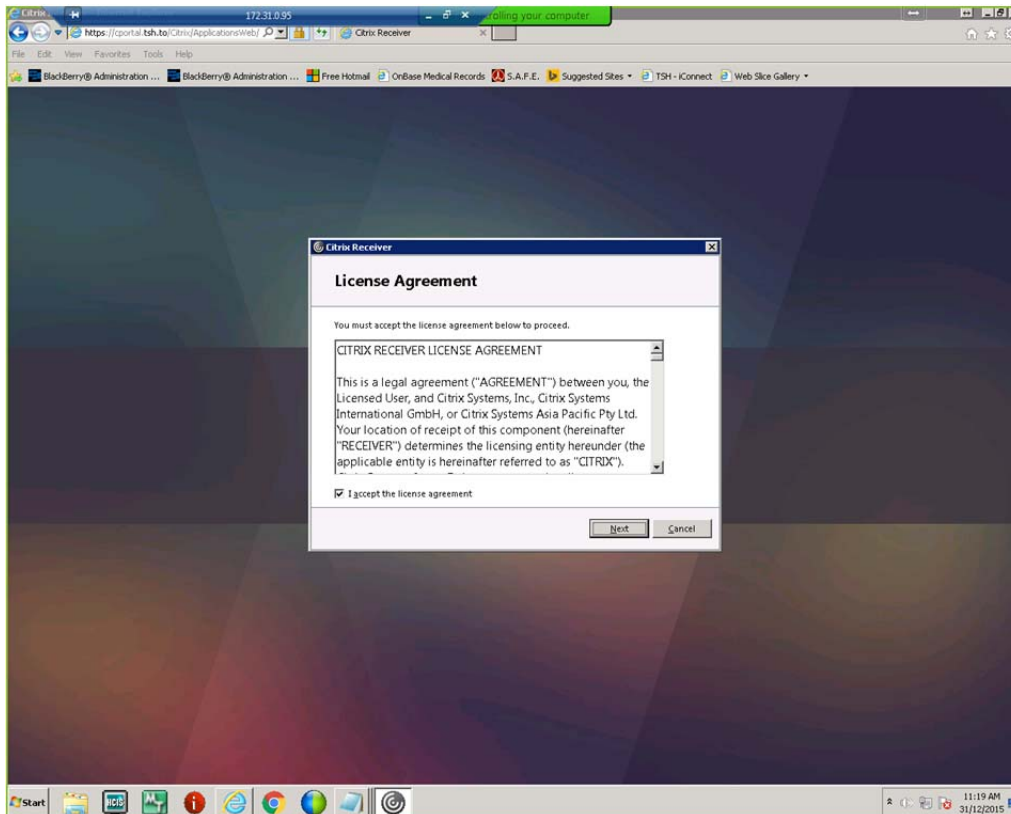
5. After clicking on **INSTALL**, click on the **Run** button when prompted at the bottom of the webpage.



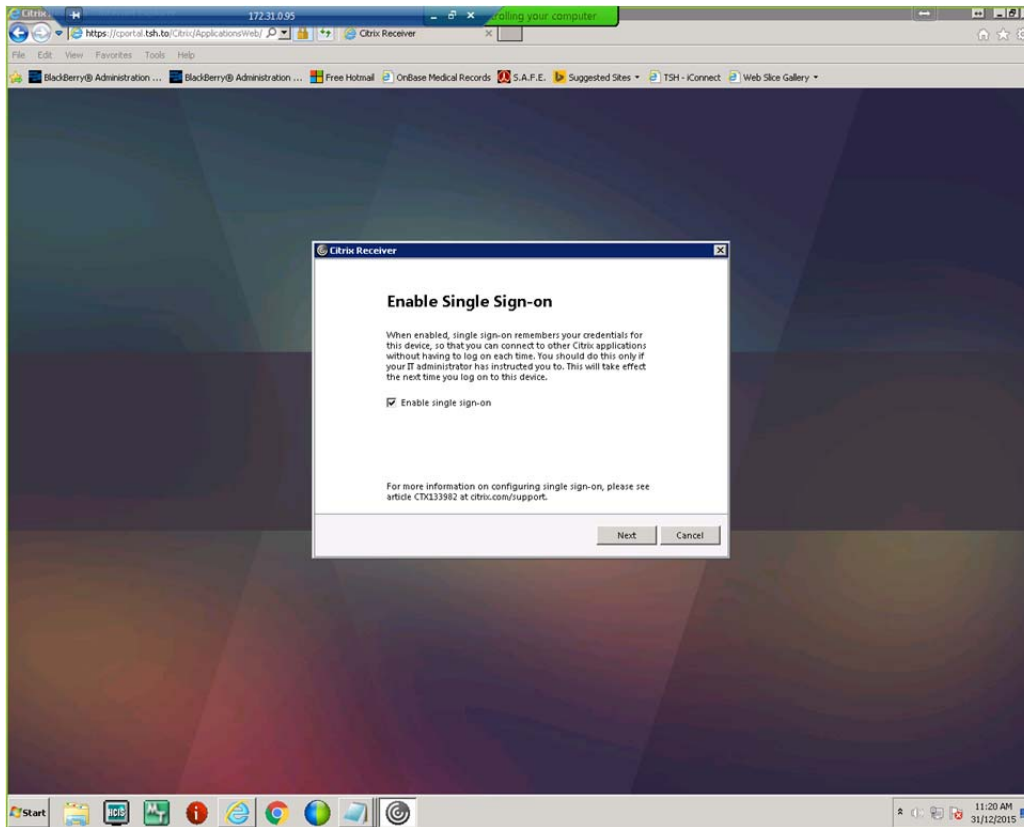
6. On the User Account Control screen, click on YES to allow the install to continue.



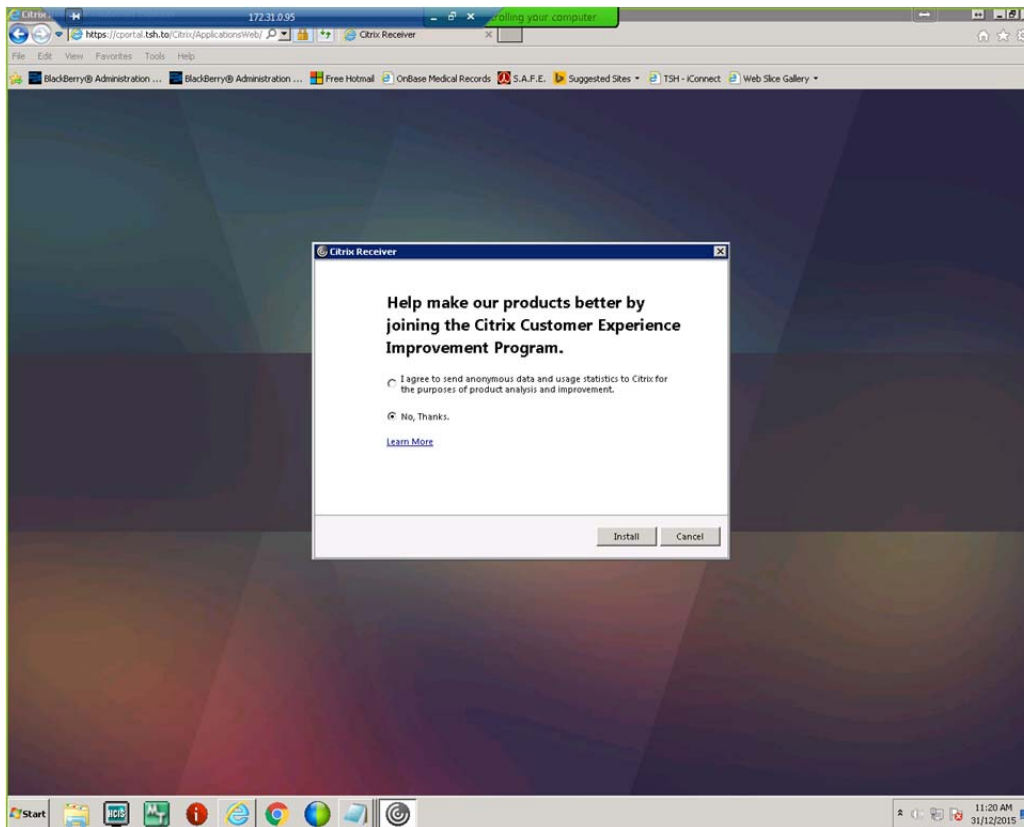
7. On the License Agreement screen, put a checkmark to accept the terms and click on the **Next** button.



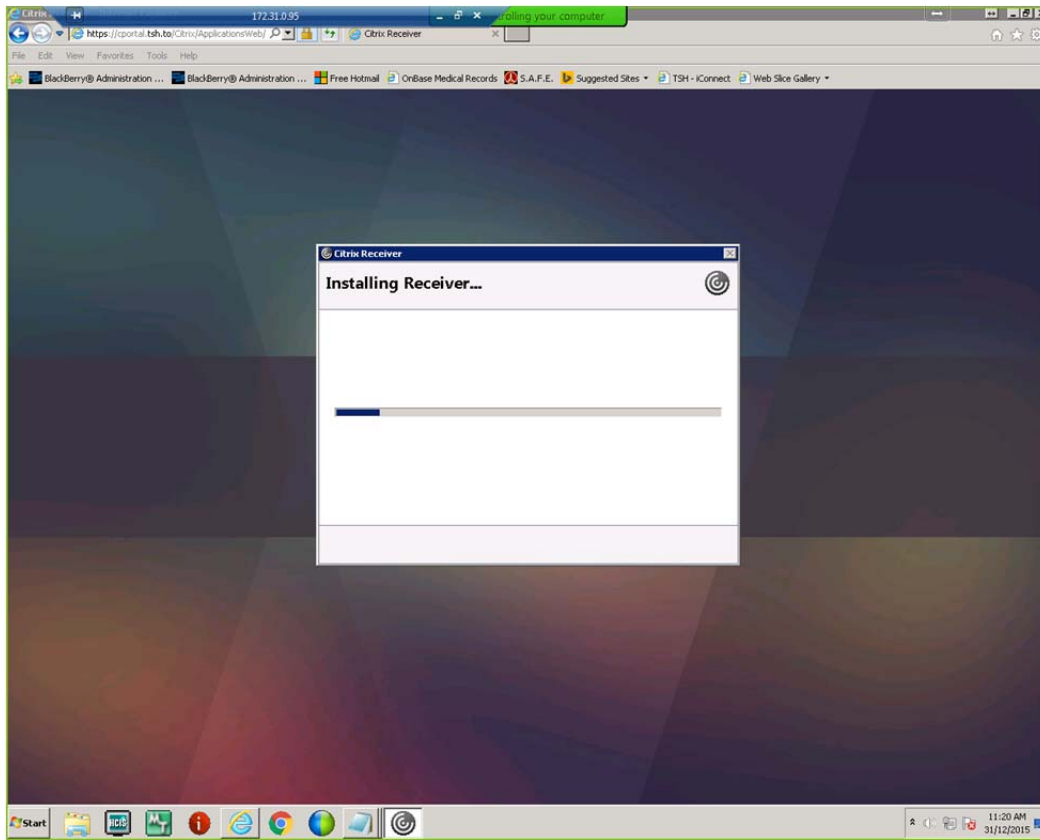
8. On the Enable Single Sign-on screen, click on the checkbox to enable Single sign-on and click the **Next** button.



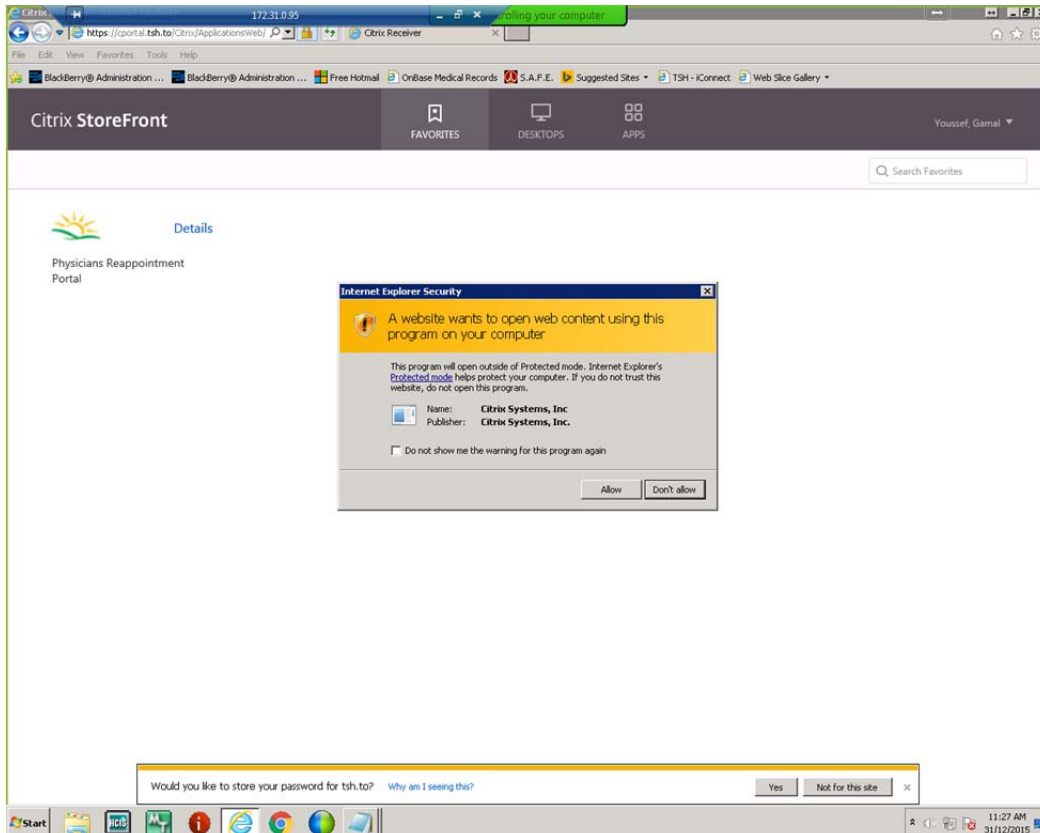
9. Click **No, Thanks** to the survey window and click on the **Install** button.



10. The Citrix receiver will now install.



11. On the Internet Explorer Security screen, click the **Allow** button.



12. Once Citrix is installed, click on an application you wish to open and Citrix will load the program.
NOTE: The Application may take a few minutes to load on the initial launch.

