

## Keeping you and your family safe during your visit:

Wear your hospital ID bracelet while you are at the hospital.

Let us know if you:

- Have had a fall in the last year.
- Require a cane, walker, crutch or wheelchair.
- Feel confused, dizzy or might lose your balance.

We are happy to provide any assistance you need.

Use hand sanitizer from the stations provided to help promote infection control.

Help us create a barrier free environment by identifying any entry, exit or services we provide, that may limit your accessibility.

Ask for our free interpretation services or free captioning service apps available to use on your smartphone if you are deaf, deafened or hard of hearing.

We take pride in providing equal care for all. With your help, we can improve our service and provide a safer healthcare environment. During your visit:

- Let us know how we are doing.
- Tell us if we can provide better care for you.
- Ask us questions about anything you don't understand.

Form 300369 (05/2023)

### Birchmount hospital

3030 Birchmount Road  
Scarborough, ON M1W 3W3  
416-495-2400

### Centenary hospital

2867 Ellesmere Road  
Scarborough, ON M1E 4B9  
416-284-8131

### General hospital

3050 Lawrence Avenue East  
Scarborough, ON M1P 2V5  
416-438-2911



@SHNcares



SHN.ca

# SHN DIAGNOSTIC IMAGING

## Computed Tomography

A guide for patients and families



## What is a Computed Tomography (CT) Scan?

Computed Tomography (CT) is an examination that uses a small amount of ionizing radiation (x-rays) and a computer to produce cross-sectional and three-dimensional images of the internal organs and structures of the body.

CT is an extremely valuable tool to provide clear and specific information used to help diagnose medical conditions, check existing conditions or provide information to prepare for other tests and treatments that may be needed.



Having a CT scan does expose you to ionizing radiation, but the amounts used in medical imaging is low and limited to only what is needed.

Ionizing radiation is not recommended for pregnant women. Let us know if you are pregnant or think you might be.

## What should I expect?

The scanner is donut-shaped and open at each end. It has a motorized table, which moves you into the center of the scanner. A qualified Technologist will explain, prepare and position you on the table, for the examination.

To see certain parts of the body clearly contrast medium (x-ray dye) may be used. Depending on the type of exam you are having, it can be swallowed as a drink, given as an enema via the rectum or injected into a vein. The contrast medium we use is safe and side effects are rare.

When a CT scan is recommended by your doctor, we ask questions about your medical history and check your suitability, ensuring that the expected benefit of the test outweighs the potential risk from radiation or any contrast medium reaction.

## How do I prepare for a CT scan?

Some scans don't need any special preparation. If contrast medium is needed, then we will ask you to stop eating or drinking 4 hours before your scan.

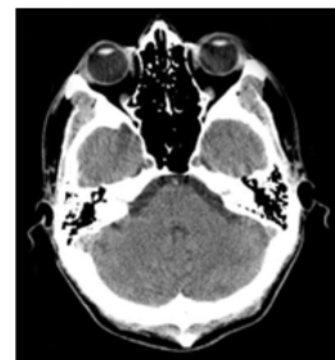
It is okay to take your usual medication with sips of water.

You will be advised of any additional or specific instructions are needed by our booking department.

## How long does a CT scan take?

Depending on the type of examination that your physician ordered, scans vary from 5-10 minutes up to 90 minutes to perform.

The images of the scan will be interpreted by one of our Radiologists and the results sent to your physician.



## Let us know if you:

- Are unable to perform any of the instructions required for the test, before your appointment.
- Are diabetic or asthmatic
- Have allergies or any heart, kidney or liver problems.
- Had a previous reaction to contrast media.