

How to contact us?

Toll-free booking line

1-866-752-6989 or 416-281-7299

Toll-free fax line

1-866-752-6990 or 416-281-7483

Rouge Valley Ajax and Pickering

580 Harwood Avenue, Ajax

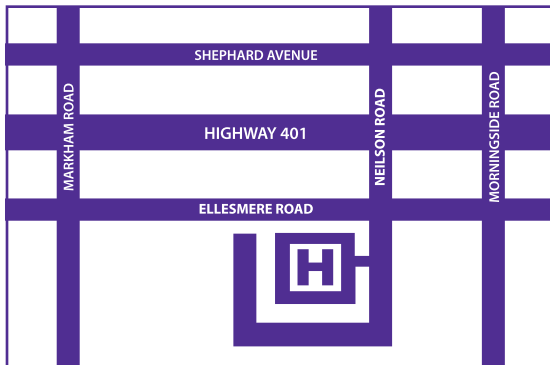
905-683-2320 ext. 1123



Rouge Valley Centenary

2867 Ellesmere Road, Toronto

416-284-8131 ext. 4135



Our mission at **Rouge Valley Health System** is to provide the best health care experience for our patients and their families.

Our vision is to be
the best at what we do.

Our hospital campuses:

Rouge Valley Ajax and Pickering

580 Harwood Avenue

Ajax, ON L1S 2J4

905-683-2320

Rouge Valley Centenary

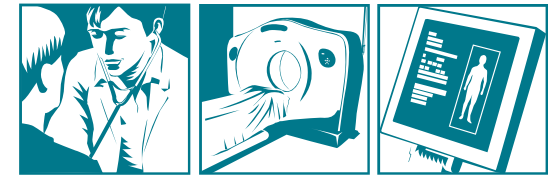
2867 Ellesmere Road

Toronto, ON M1E 4B9

416-284-8131

Computerized Tomography

What you should know



Your appointment

Date: _____

Time: _____

Diagnostic Imaging



The best at what we do.

www.rougevalley.ca

Rouge Valley Health System has a state-of-the-art CT unit. This leading edge equipment will allow sophisticated examinations to be performed rapidly and accurately on patients.

Your doctor has ordered a CT scan, and this brochure will answer some questions you may have. Should you have any questions or concerns not covered in this brochure, please do not hesitate to ask your doctor or the technologist just before your procedure. If you are pregnant or think that you might be, please contact your doctor prior to your CT scan appointment.

What is CT?

CT (Computerized Tomography) is an x-ray procedure that combines many x-ray images with the aid of a computer to produce cross-sectional views and, if needed, three-dimension images of the internal organs and structures of the body.

CT is an extremely valuable tool used to define normal and abnormal structures in the body and/or assist in procedures by helping to accurately guide the placement of instruments.

How do CT scans differ from MRI scans?

CT and MRI images sometimes look very similar, but the equipment used to perform the scans is different. CT uses ionizing radiation just as with routine x-ray, while MRI uses a magnetic field. Depending on the clinical indications, one scan may be preferred over the other, or both may be required.

What should I expect?

During the CT scan, you will be lying on a firm table. The technologist will position you on the table, then move the table into the CT scanner. The scanner is donut-shaped and open on each end. You may be asked to hold your breath during your scan.



Rouge Valley's CT unit is a valued piece of hospital equipment, and an important tool for examining our patients.

The actual scan times vary from a few minutes up to an hour-and-a-half depending on the type of scan required. When the test is finished, you are free to go. The radiologist will interpret the pictures and send a report to your physician.

What are contrast agents?

Contrast agents are used to image tissues and structures that are not normally seen very well. *Intravenous (IV) contrast agents* are used to enhance organs and visualize blood vessels, while *oral contrast agents* are used to visualize the digestive tract. Depending on the CT exam required to diagnose or rule out pathology, contrast may or may not be needed. This is determined by the radiologist.

Can I breastfeed after an injection of contrast?

After your CT Scan with IV contrast, you may continue to breastfeed normally. However, if you are still concerned about any potential harm to the baby, you can express and discard the breast milk for 24 hours.

What if I'm claustrophobic?

Some patients may experience claustrophobia or anxiety within the CT scanner. If you require sedation, your physician must give you a prescription prior to your appointment date. You must bring someone with you if you plan on taking medication to relax you during your exam.

Rest assured that the CT suite at the Rouge Valley is very patient-friendly. If you have any concerns, we welcome you to give us a call or stop in to see the scanner.

If you are on WSIB or disability insurance

Rouge Valley provides CT services to the WSIB and insurance companies. If you have a valid claim and need a CT scan, talk to your claims manager about making arrangements through the WSIB or your insurance company.

On the day of your test, make sure that you have your WSIB claim number or insurance policy number available.

How should I prepare for my exam?

- **Abdominal and pelvic CT:** Light dinner on the night before your exam consisting mainly of fluids. On day of exam, do not eat any solid foods but drink plenty of fluids up to two hours before your appointment.
- **Chest CT:** Nothing to eat four hours prior to your exam. Drink plenty of fluids up to one hour before your appointment.
- **All other CT examinations:** No preparation necessary.

In order to expedite the reporting of your examination, please bring all of your outside films/images. This includes x-rays, ultrasound, nuclear medicine scan, MRI or previous CT.