

2017 CORPORATE ENVIRONMENTAL SCAN

Our Patients, Our Community, Our Hospital

HIGHLIGHTS & INSIGHTS (January 2018)

About Scarborough and Rouge Hospital

Scarborough and Rouge Hospital (SRH) was formed on December 1, 2016 through the merger of the Birchmount and General sites of The Scarborough Hospital and the Centenary site of Rouge Valley Health System. We are committed to delivering the highest quality patient and family centred care, with a focus on enhancing access to services for the Scarborough community.

3 HOSPITAL SITES



Birchmount site
3030 Birchmount Road



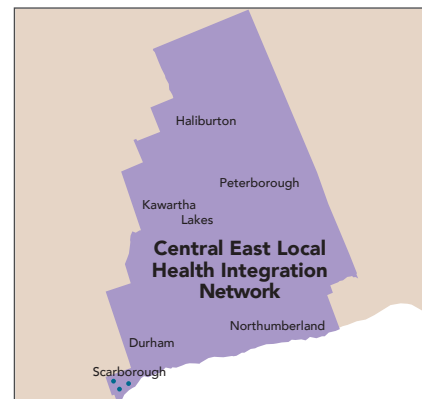
General site
3050 Lawrence Avenue East



Centenary site
2867 Ellesmere Road

SRH also has 6 satellite dialysis and mental health sites

OUR HOSPITAL IS PART OF THE CENTRAL EAST LOCAL HEALTH INTEGRATION NETWORK



The Central East Local Health Integration Network (LHIN) is one of 14 regional bodies responsible for leading the integration and funding of health services within communities across the province. Within the Central East LHIN, there are:

- 1,264 Family physicians
- 7 Family health teams
- 6 Community health centres
- 46 Community support service agencies
- 68 Long-term care homes
- 9 Hospitals (including SRH)

THIRD LARGEST HOSPITAL IN ONTARIO

802
beds

and 87
bassinets

\$635.5
million

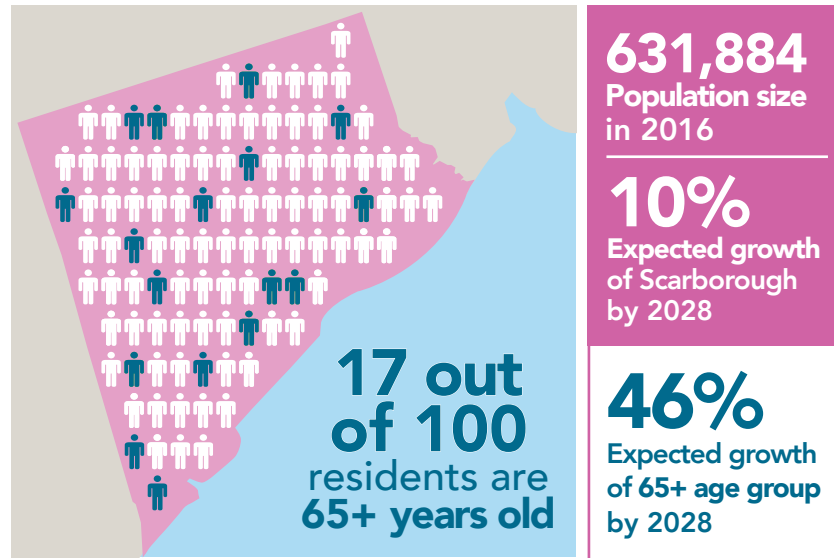
Operational
budget



5,133 staff
1,063 professional staff
More than **1,500** volunteers

The Scarborough community

SCARBOROUGH'S POPULATION IS GROWING AND AGING



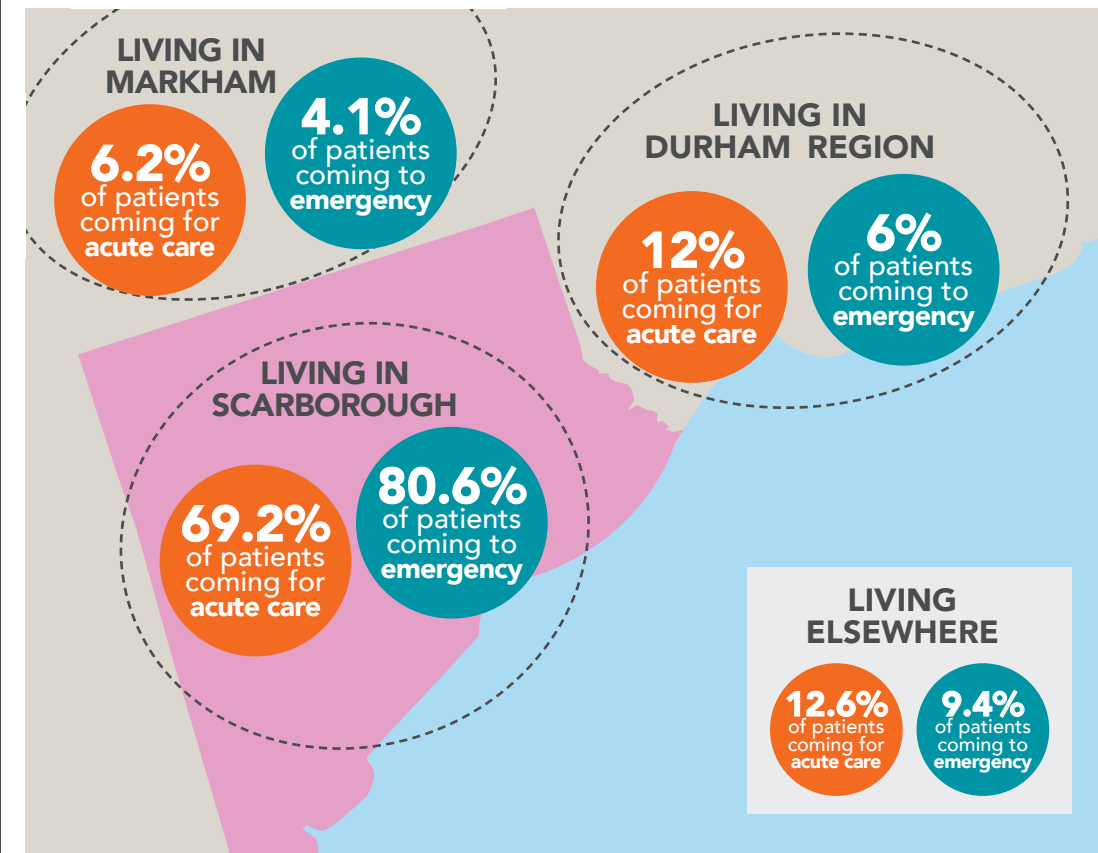
SCARBOROUGH RESIDENTS ARE HIGHLY DIVERSE



Patients coming to our hospital

OUR PATIENTS PRIMARILY COME FROM SCARBOROUGH

MANY ALSO COME FROM SURROUNDING COMMUNITIES



MORE ELDERLY PATIENTS COMING TO OUR HOSPITAL

GREATEST INCREASE AMONG PATIENTS 50 YEARS AND OLDER

0-19 years		20-49 years		50-79 years		80+ years	
Acute care	Emergency care	Acute care	Emergency care	Acute care	Emergency care	Acute care	Emergency care
2012/13 10,417 patients	2012/13 35,234 patients	2012/13 12,703 patients	2012/13 64,965 patients	2012/13 13,977 patients	2012/13 54,740 patients	2012/13 7,442 patients	2012/13 18,341 patients
-9.7%	+2.9%	-13%	+3.8%	+4.1%	+16.1%	+0.1%	+12.9%
2016/17 9,410 patients	2016/17 36,258 patients	2016/17 11,055 patients	2016/17 67,461 patients	2016/17 14,547 patients	2016/17 65,553 patients	2016/17 7,449 patients	2016/17 20,703 patients

Services and care at SRH

SRH OFFERS A RANGE OF CLINICAL PROGRAMS AND SUPPORT SERVICES

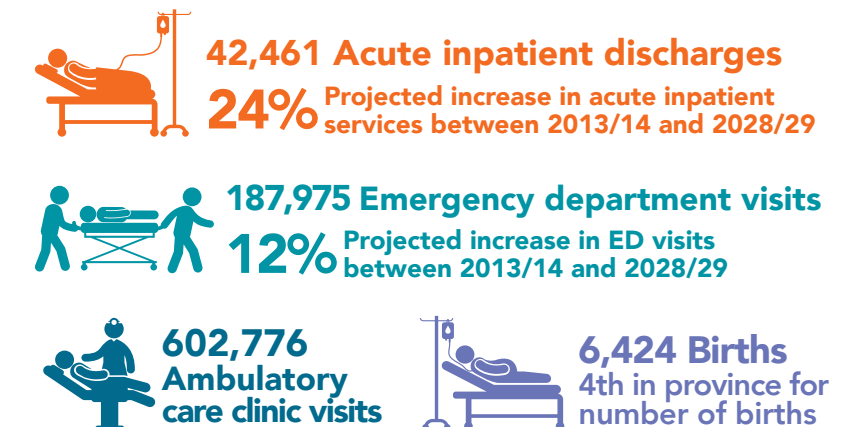
- 24/7 Emergency departments
- Critical care
- Obstetrical and paediatric services
- General medicine and surgical services
- Cardiac services (REGIONAL)
- Cancer care services
- Nephrology services (REGIONAL)
- Post-acute care
- Palliative care
- Mental health services
- Diagnostic services
- Ambulatory care clinics

TOP 5 CLINICAL REASONS THAT PATIENTS COME TO OUR HOSPITAL

- 1 Pregnancy and Childbirth
- 2 Care for Newborns
- 3 Circulatory System
- 4 Digestive System
- 5 Respiratory System

These 5 clinical areas account for 58% of acute inpatient volumes

DEMAND ON PATIENT SERVICES IS HIGH AND EXPECTED TO CONTINUE GROWING



Key themes and strategic considerations

PATIENT AND COMMUNITY

- Growth in the communities we serve
- Aging, and people living longer with chronic diseases
- Growing diversity and opportunities for inclusion
- Relatively low utilization of hospital services

PATIENT/FAMILY ENGAGEMENT

- Involvement of patients and families in their care, planning, design of services
- Creation of Patient and Family Advisory Councils at the provincial, LHIN, and hospital levels

PARTNERSHIPS

- Hospitals continuing to build strong networks and partnerships as a part of a trend toward an integrated health system

ACCESS

- Improving access to care across the continuum and in the appropriate setting
- Addressing capacity shortfalls in the long-term care and community sectors
- Reducing inequities to remove variation by geography and population groups

EFFICIENCY

- Continue to find efficiencies while driving high-quality care in a time of fiscal restraint
- Public demand for value-for-money from the public sector
- Appropriate investments in infrastructure (facilities, equipment, IT) to enable high performance

CARE PROVIDERS

- Aging workforce
- Expanding scope in certain professions (e.g. nurse practitioners)

TECHNOLOGICAL ADVANCEMENTS

- Innovation for information management and clinical service delivery

Download the full 2017 Environmental Scan at planningourfuture.srhhospital.ca

SCARBOROUGH AND ROUGE HOSPITAL

